



City of
VALLEY PARK
Missouri

Hillsboro Road and Meramec Station Road Stormwater Improvements Project
September 28, 2023

In July 2022, the City of Valley Park applied for a stormwater infrastructure grant from the Missouri Department of Natural Resources (MoDNR). These grant funds are provided by the state American Rescue Plan Act grant program and are administered by MoDNR. The focus of the project is to make stormwater improvements along Hillsboro Road and a portion of Meramec Station Road with a total construction cost of just over \$4.1 million. In November 2022, the City received notice that it had been awarded the grant.

As identified on the documents attached to this notice, the project area starts at the intersection of Meramec Station Road and Smizer Mill Road. It continues down Meramec Station Road, turns down Hillsboro Road, and stops at the City Limits. The planned scope of the project includes new stormwater pipe, curbs, and gutters throughout the entire project, decorative stone retaining walls along Hillsboro Road, and a new intersection at Meramec Station Road and Hillsboro Road.

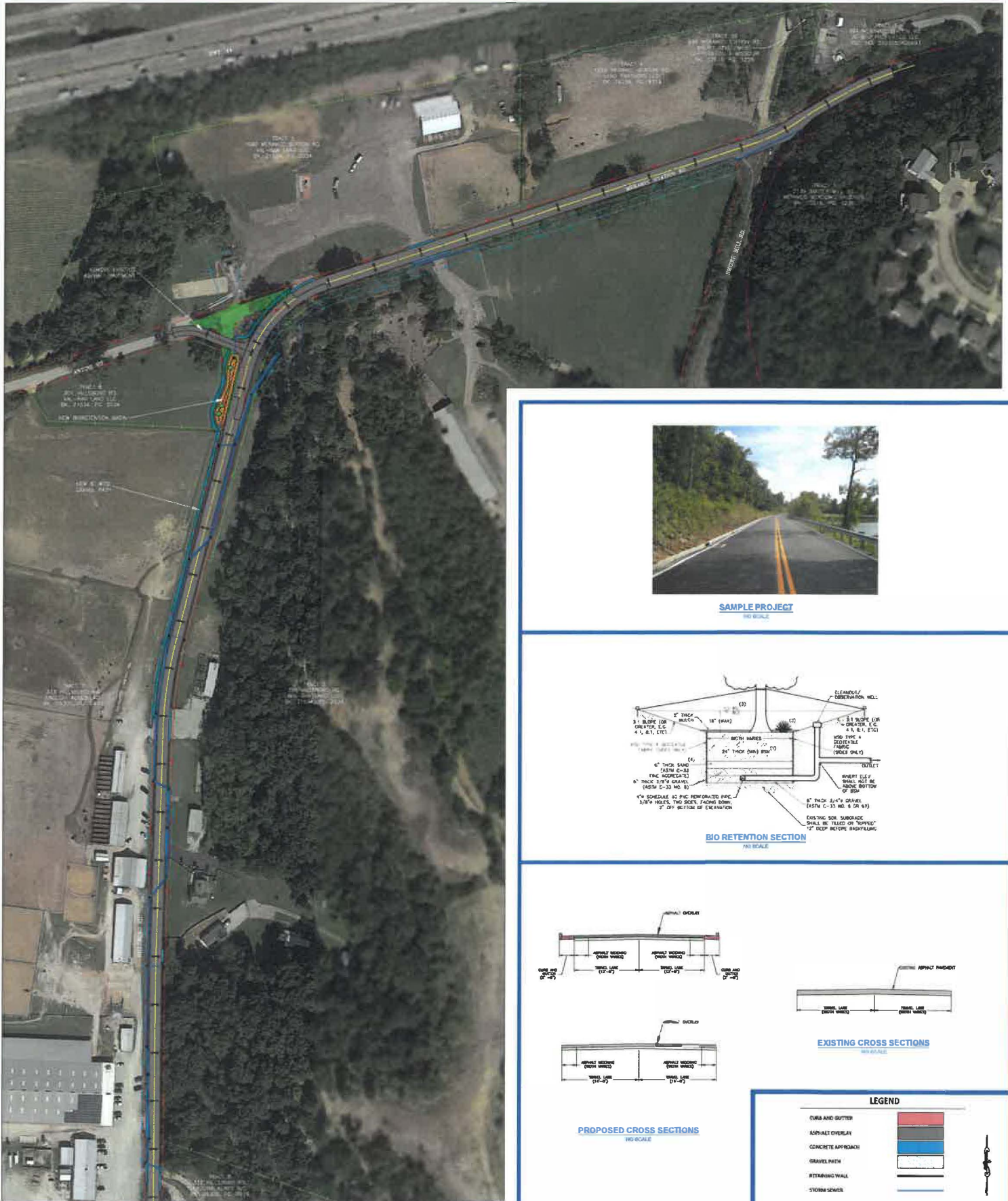
The plans are nearly 75% complete, but the City and its engineers are still working to get approval from the Metropolitan St. Louis Sewer District, acquire necessary right-of-way, and finalize the Invitation for Bids documents. The bid submission deadline will be thirty days after the Invitation for Bids is published, and the City will move quickly to review the bids and award the project. Unfortunately, we do not have a firm timeline about when construction will begin or end, but the City would like to begin this project during the winter 2023 and complete the project in the spring or summer 2024 if at all possible.

If you have any questions, comments, or concerns, please contact Nathan Schauf, City Administrator, using the contact information listed below:

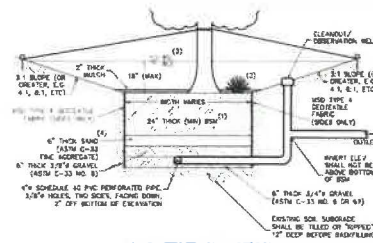
Nathan Schauf, City Administrator
nschauf@valleyparkmo.org
636-861-1385

City of Valley Park
320 Benton Street
Valley Park, Missouri 63088

###



SAMPLE PROJECT
 NO SCALE



LEGEND

CURB AND GUTTER	
ASPHALT OVERLAY	
CONCRETE APPROACH	
GRAVEL PAVEMENT	
RETAINING WALL	
STORM SEWER	



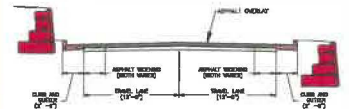
**HILLSBORO AND MERAMAC STATION RD.
ARPA STORM WATER IMPROVEMENTS
CITY OF VALLEY PARK, MISSOURI**



SAMPLE PROJECT
NO SCALE



EXISTING CROSS SECTIONS
NO SCALE



PROPOSED CROSS SECTIONS
NO SCALE

LEGEND

- CURBS AND GUTTERS
- ASPHALT OVERLAY
- CONCRETE APPROACH
- GRAVEL PATH
- RETAINING WALL
- STORM SEWER