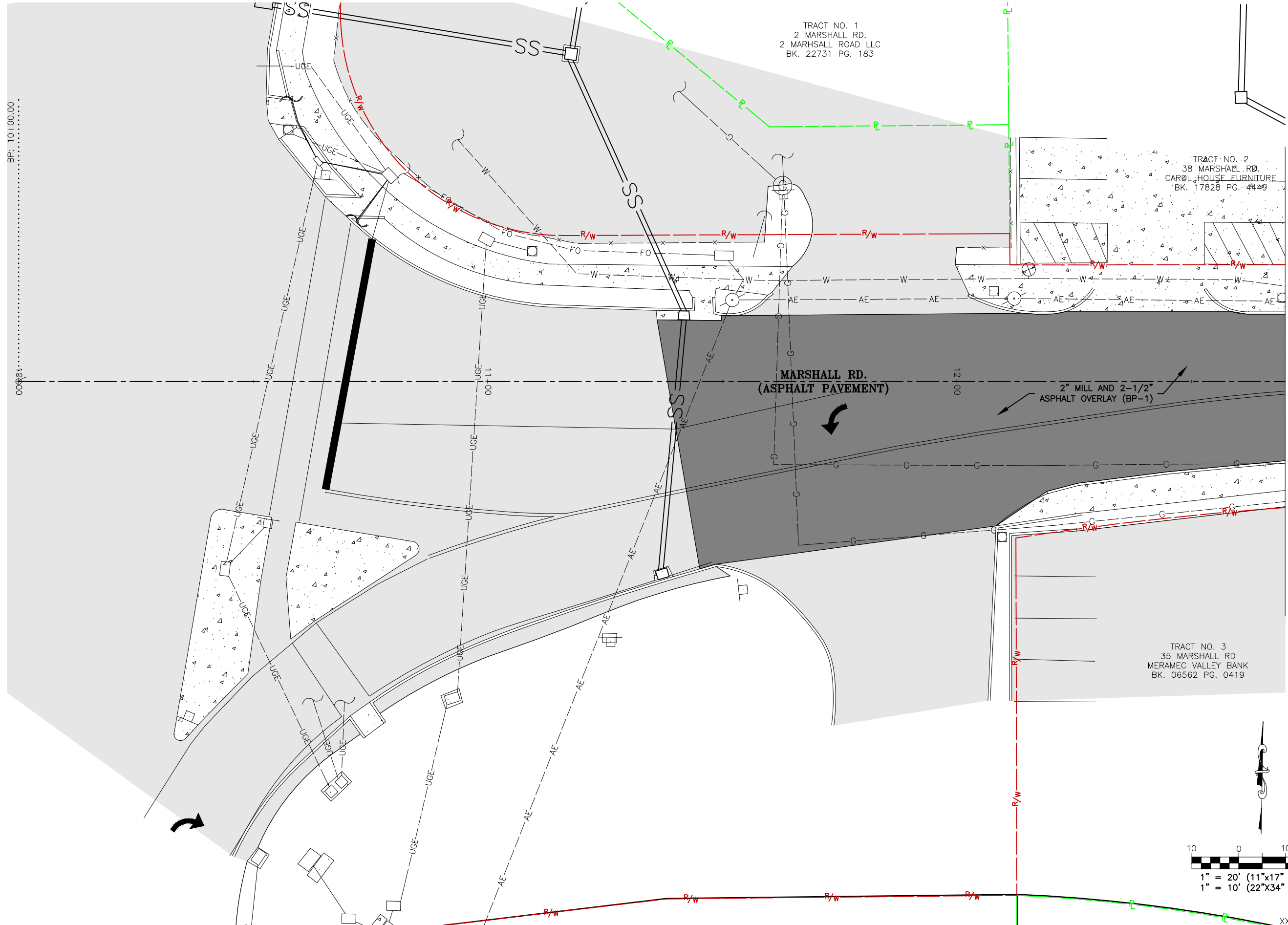


SITE PLAN



MATCH LINE STA. 12+70 SEE SHEET S-1

314-842-4033 (cell)
314-842-5957 (fax)
www.cochrane.com

COCHRAN

Civil Engineering
Land Surveying
Architecture
Site Development
Master Planning
General Consulting

ENGINEERING CERTIFICATE OF AUTHORITY NUMBER: 200700897
LAND SURVEYING CERTIFICATE OF AUTHORITY NUMBER: 200700829

THE PROFESSIONAL'S SEAL AFFIXED TO THIS SHEET APPLIES ONLY TO ITEMS ON THIS SHEET. ALL DRAWINGS OR OTHER DOCUMENTS NOT EXHIBITING THIS SEAL SHALL NOT BE CONSIDERED PREPARED BY THIS PROFESSIONAL.

ST. LOUIS AVENUE IMPROVEMENTS PH.3
FEDERAL PROJECT NO. STP-9901 (651)
CITY OF VALLEY PARK, MISSOURI

10 0 10 20

1" = 20' (11"x17" SHEETS)
1" = 10' (22"x34" SHEETS)

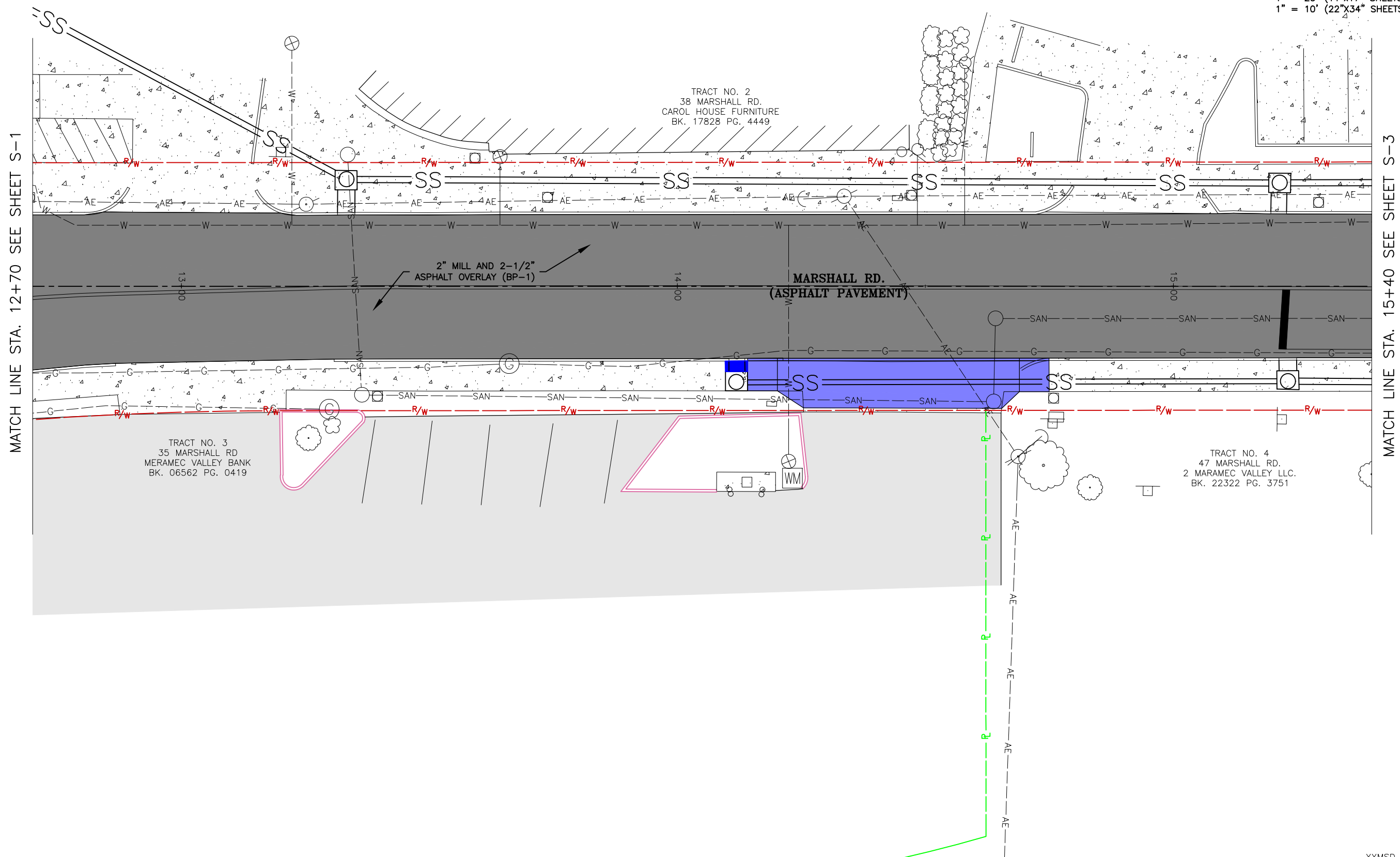
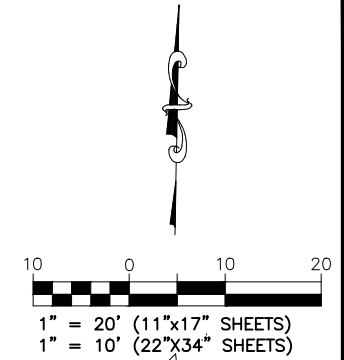
DATE: AUGUST 2021
SCALE: 1"=20'

PROJ. NO.: SC20-1130
DWG. NO.: S-1

XXMSD-XXXX

DATE:	REVISION:
DWN. BY: H.B.C.	APPD. BY: K.J.W.
DATE: AUGUST 2021	SCALE: 1"=20'
PROJ. NO.: SC20-1130	DWG. NO.: S-1

SITE PLAN



MATCH LINE STA. 12+70 SEE SHEET S-1

MATCH LINE STA. 15+40 SEE SHEET S-3

314-842-4033 (cell)
314-842-5957 (fax)
www.cochrane.com

COCHRAN

Civil Engineering
Land Surveying
Architecture
Site Development
Master Planning
General Consulting

ENGINEERING CERTIFICATE OF AUTHORITY NUMBER: 2007000937
LAND SURVEYING CERTIFICATE OF AUTHORITY NUMBER: 2007004529

737 RUDDER ROAD
FENTON, MISSOURI 63026

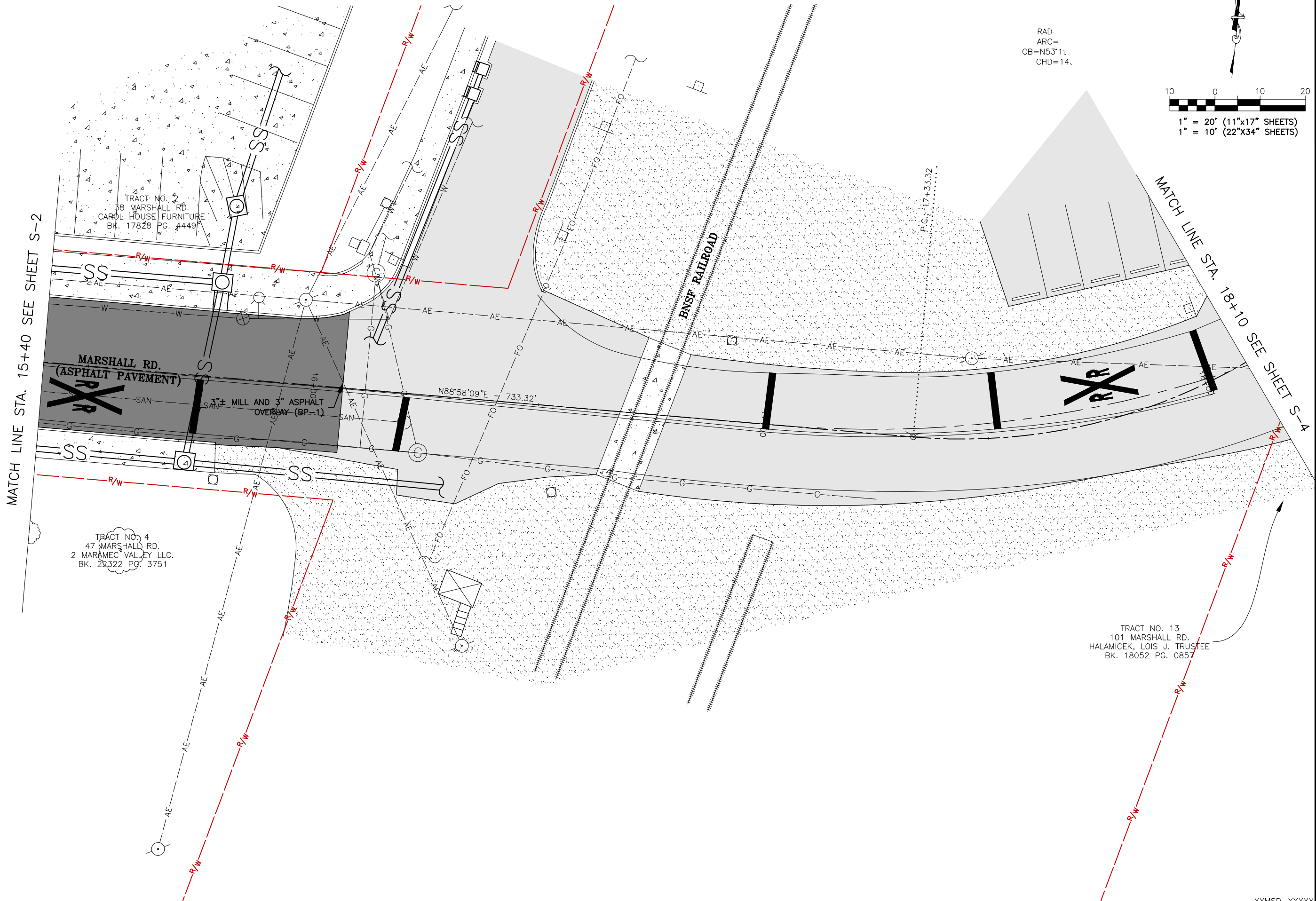
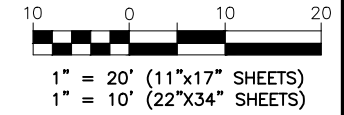
THE PROFESSIONAL'S SEAL AFFIXED TO THIS SHEET APPLIES ONLY TO ITEMS ON THIS SHEET. ALL DRAWINGS OR OTHER DOCUMENTS NOT EXHIBITING THIS SEAL SHALL NOT BE CONSIDERED PREPARED BY THIS PROFESSIONAL.

ST. LOUIS AVENUE IMPROVEMENTS PH.3
FEDERAL PROJECT NO. STP-9901 (651)
CITY OF VALLEY PARK, MISSOURI

DATE:	REVISION:
DWN. BY: H.B.C.	APPD. BY: K.J.W.
DATE: AUGUST 2021	
SCALE: 1"=20'	
PROJ. NO: SC20-1130	
DWG. NO: S-2	

SITE PLAN

RAD
ARC=
CB=N53°1'
CHD=14.



TRACT NO. 3
38 MARSHALL RD.
CAROL HOUSE FURNITURE
BK. 17828 PG. 4449

MARSHALL RD.
(ASPHALT PAVEMENT)

TRACT NO. 4
47 MARSHALL RD.
2 MARAMEC VALLEY LLC.
BK. 22322 PG. 3751

TRACT NO. 13
101 MARSHALL RD.
HALAMICEK, LOIS J. TRUSTEE
BK. 18052 PG. 0857

314-842-4033 (cell)
314-842-5957 (fax)
www.cochrane.com

COCHRAN

Civil Engineering
Land Surveying
Architecture
Site Development
Master Planning
General Consulting

ENGINEERING CERTIFICATE OF AUTHORITY NUMBER: 2007000937
LAND SURVEYING CERTIFICATE OF AUTHORITY NUMBER: 2007004529

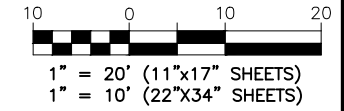
THE PROFESSIONAL'S SEAL AFFIXED TO THIS SHEET APPLIES ONLY TO ITEMS ON THIS SHEET. ALL DRAWINGS OR OTHER DOCUMENTS NOT SHARING THIS SEAL SHALL NOT BE CONSIDERED PREPARED BY THIS PROFESSIONAL.

ST. LOUIS AVENUE IMPROVEMENTS PH.3
FEDERAL PROJECT NO. STP-9901(651)
CITY OF VALLEY PARK, MISSOURI

DATE:	REVISION:
DWN. BY: H.B.C.	APP'D. BY: K.J.W.
DATE: AUGUST 2021	
SCALE: 1"=20'	
PROJ. NO: SC20-1130	
DWG. NO: S-3	

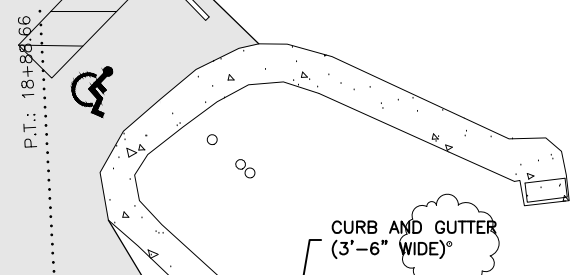
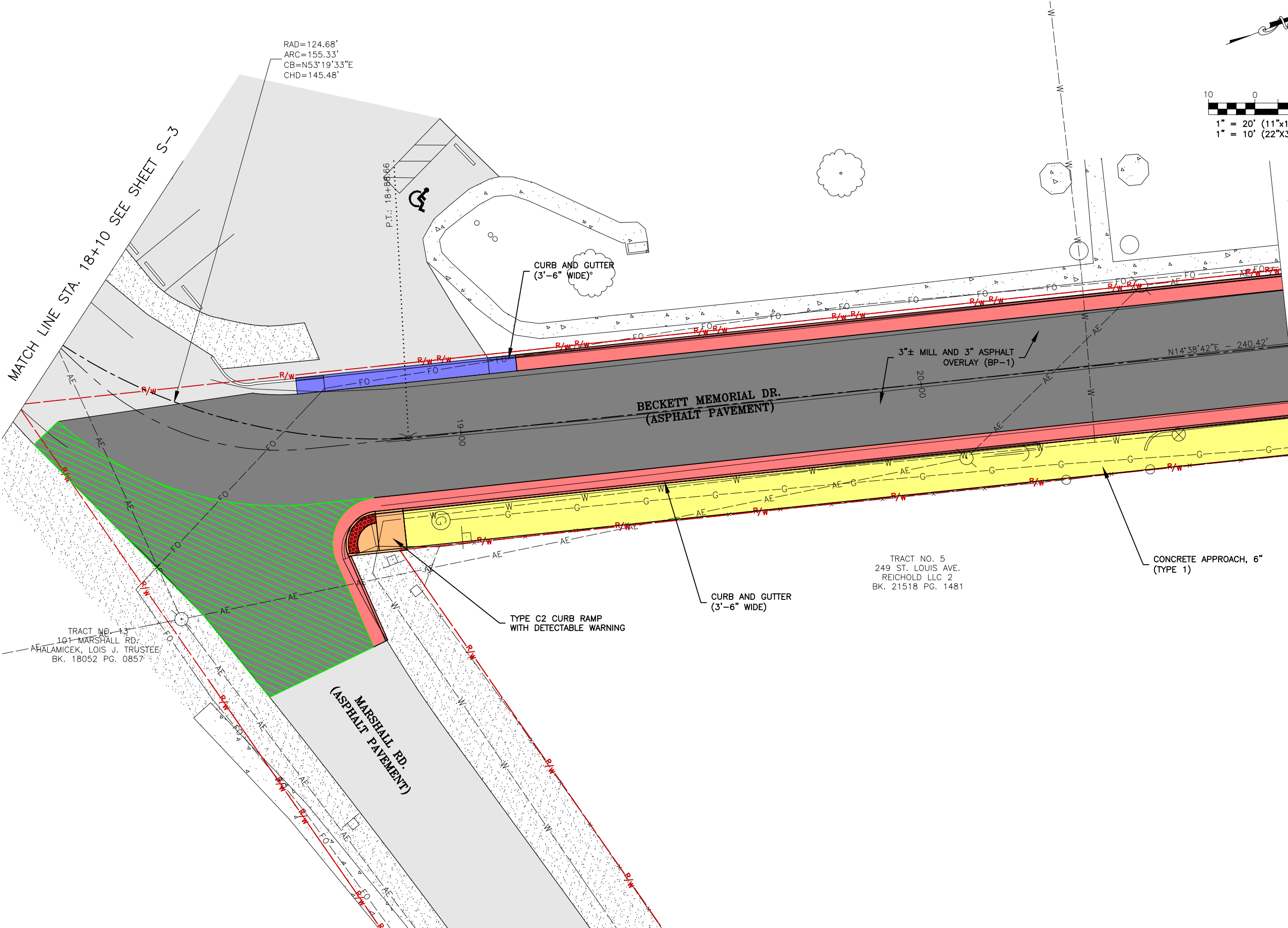
SITE PLAN

RAD=124.68'
 ARC=155.33'
 CB=N53°19'33"E
 CHD=145.48'



MATCH LINE STA. 18+10 SEE SHEET S-3

MATCH LINE STA. 20+80 SEE SHEET S-5



TRACT NO. 13
 101 MARSHALL RD.
 AHALAMICEK, LOIS J. TRUSTEE
 BK. 18052 PG. 0857

MARSHALL RD.
 (ASPHALT PAVEMENT)

BECKETT MEMORIAL DR.
 (ASPHALT PAVEMENT)

TRACT NO. 5
 249 ST. LOUIS AVE.
 REICHO LD LLC 2
 BK. 21518 PG. 1481

TYPE C2 CURB RAMP
 WITH DETECTABLE WARNING

CURB AND GUTTER
 (3'-6" WIDE)

CONCRETE APPROACH, 6"
 (TYPE 1)

314-842-4033 (cell)
 314-842-5957 (fax)
 www.cochrane.com

COCHRAN

737 RUDDER ROAD
 FENTON, MISSOURI 63026

Civil Engineering
 Land Surveying
 Architecture
 Site Development
 Master Planning
 General Consulting

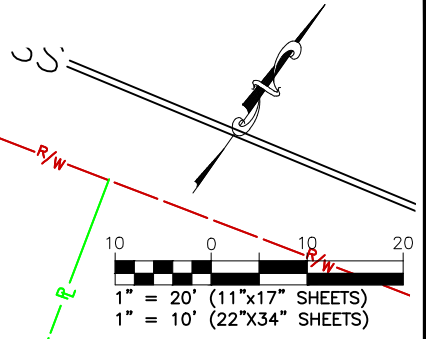
ENGINEERING CERTIFICATE OF AUTHORITY NUMBER: 2007000397
 LAND SURVEYING CERTIFICATE OF AUTHORITY NUMBER: 2007004529

THE PROFESSIONAL'S SEAL AFFIXED TO THIS SHEET APPLIES ONLY TO ITEMS ON THIS SHEET. ALL DRAWINGS OR OTHER DOCUMENTS NOT EXHIBITED THIS SEAL SHALL NOT BE CONSIDERED PREPARED BY THIS PROFESSIONAL.

ST. LOUIS AVENUE IMPROVEMENTS PH.3
 FEDERAL PROJECT NO. STP-9901 (651)
 CITY OF VALLEY PARK, MISSOURI

DATE:	REVISION:
DWN. BY:	APPD. BY:
H.B.C.	K.J.W.
DATE:	
AUGUST 2021	
SCALE:	
1"=20'	
PROJ. NO.:	
SC20-1130	
DWG. NO.:	
S-4	

SITE PLAN



314-842-4033 (cell)
314-842-5957 (fax)
www.cochrane.com

COCHRAN

Civil Engineering
Land Surveying
Architecture
Site Development
Master Planning
General Consulting

ENGINEERING CERTIFICATE OF AUTHORITY NUMBER: 2007000937
LAND SURVEYING CERTIFICATE OF AUTHORITY NUMBER: 2007004529

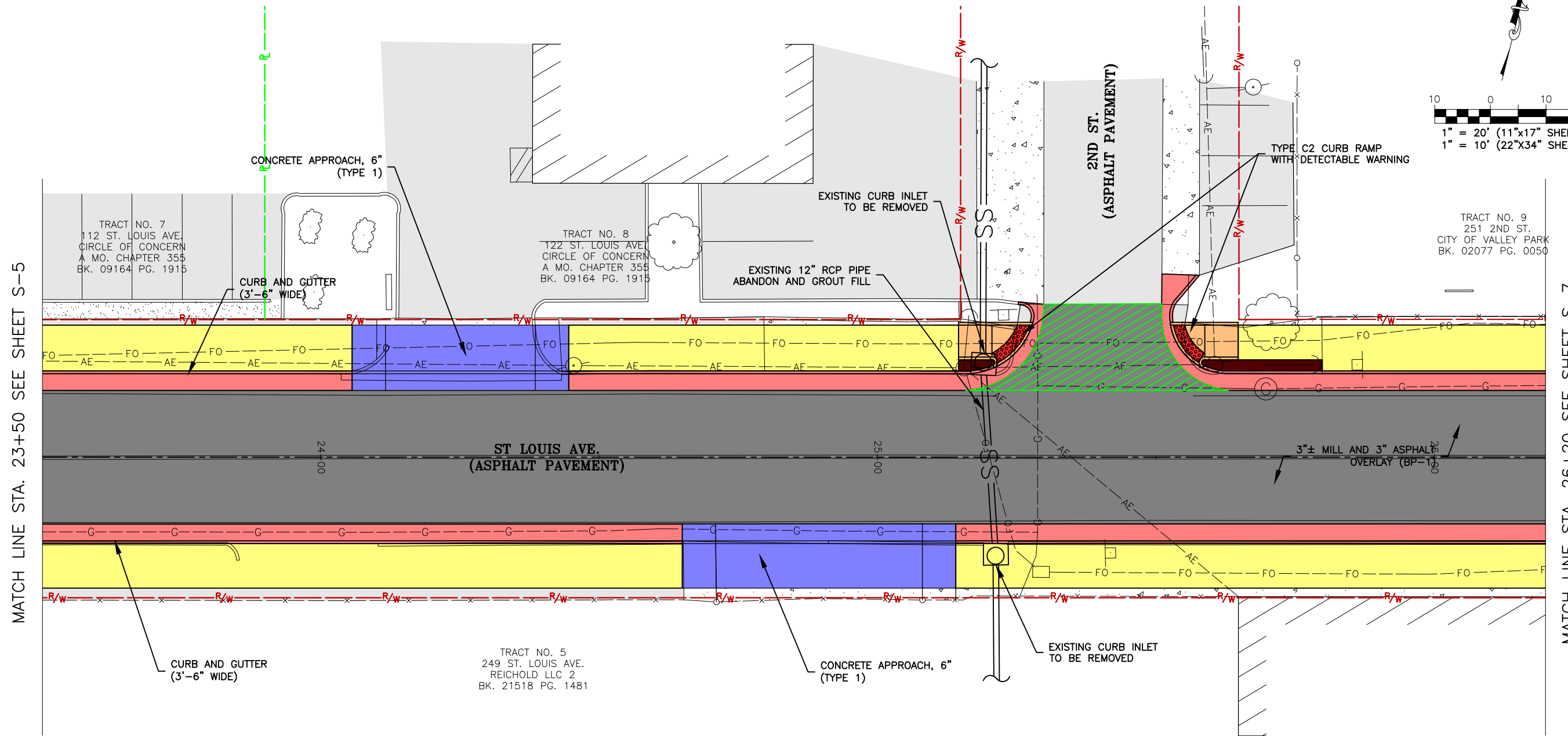
737 RUDDER ROAD
FENTON, MISSOURI 63026

THE PROFESSIONAL'S SEAL AFFIXED TO THIS SHEET APPLIES ONLY TO ITEMS ON THIS SHEET. ALL DRAWINGS OR OTHER DOCUMENTS NOT EXHIBITING THIS SEAL SHALL NOT BE CONSIDERED PREPARED BY THIS PROFESSIONAL.

ST. LOUIS AVENUE IMPROVEMENTS PH.3
FEDERAL PROJECT NO. STP-9901 (651)
CITY OF VALLEY PARK, MISSOURI

DATE:	REVISION:
DWN. BY:	APPD. BY:
H.B.C.	K.J.W.
DATE:	
AUGUST 2021	
SCALE:	
1"=20'	
PROJ. NO.:	
SC20-1130	
DWG. NO.:	
S-5	

SITE PLAN



314-842-4033 (cell)
314-842-5957 (fax)
www.cochrane.com

COCHRAN

Civil Engineering
Land Surveying
Architecture
Site Development
Master Planning
General Consulting
LAND SURVEYING CERTIFICATE OF AUTHORITY NUMBER: 2007000937
ENGINEERING CERTIFICATE OF AUTHORITY NUMBER: 2007004529

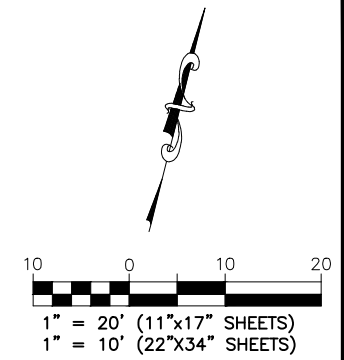
737 RUDDER ROAD
FENTON, MISSOURI 63026

THE PROFESSIONAL'S SEAL AFFIXED TO THIS SHEET APPLIES ONLY TO ITEMS ON THIS SHEET. ALL DRAWINGS OR OTHER DOCUMENTS NOT EXHIBITING THIS SEAL SHALL NOT BE CONSIDERED PREPARED BY THIS PROFESSIONAL.

ST. LOUIS AVENUE IMPROVEMENTS PH.3
FEDERAL PROJECT NO. STP-9901 (651)
CITY OF VALLEY PARK, MISSOURI

DATE:	REVISION:
DWN. BY: H.B.C.	APPD. BY: K.J.W.
DATE: AUGUST 2021	
SCALE: 1"=20'	
PROJ. NO: SC20-1130	
DWG. NO: S-6	

SITE PLAN

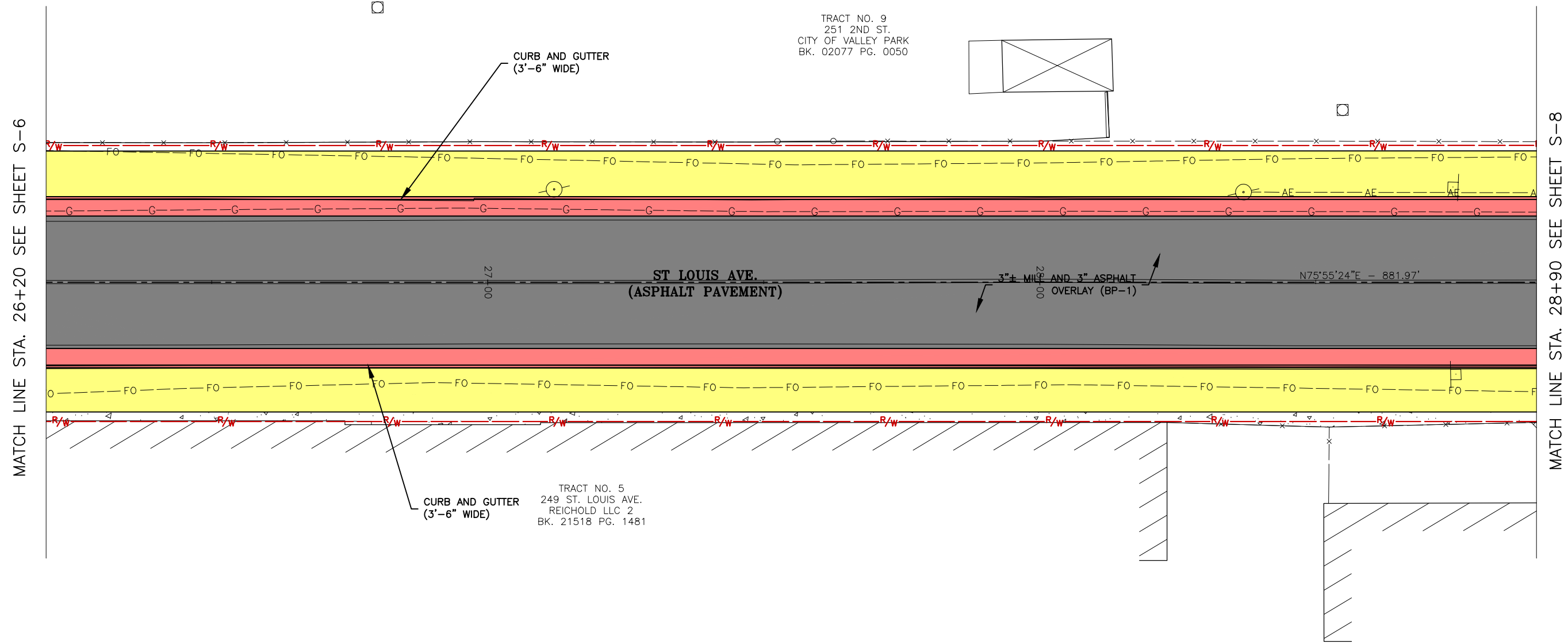


314-842-4033 (cell)
314-842-5957 (fax)
www.cochrane.com

COCHRAN
737 RUDDER ROAD
FENTON, MISSOURI 63026

Civil Engineering
Land Surveying
Architecture
Site Development
Master Planning
General Consulting

ENGINEERING CERTIFICATE OF AUTHORITY NUMBER: 2007000937
LAND SURVEYING CERTIFICATE OF AUTHORITY NUMBER: 2007004529



MATCH LINE STA. 26+20 SEE SHEET S-6

MATCH LINE STA. 28+90 SEE SHEET S-8

TRACT NO. 9
251 2ND ST.
CITY OF VALLEY PARK
BK. 02077 PG. 0050

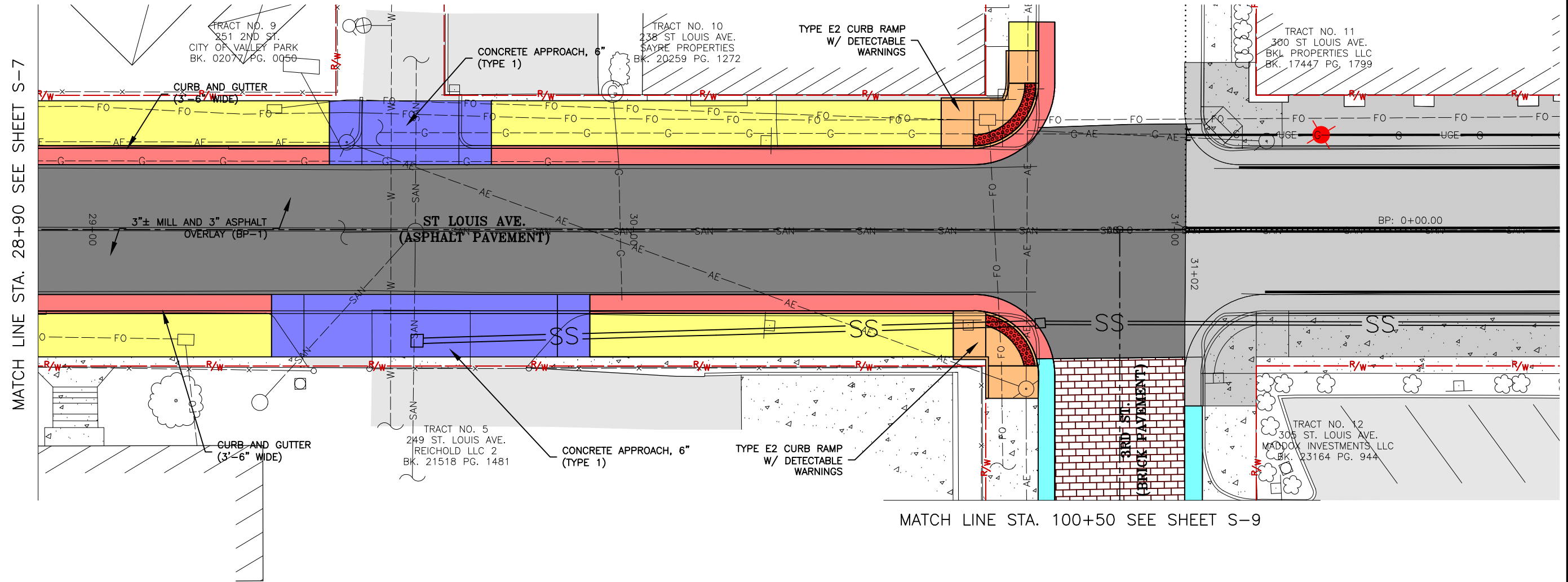
TRACT NO. 5
249 ST. LOUIS AVE.
REICHOILD LLC 2
BK. 21518 PG. 1481

THE PROFESSIONAL'S SEAL AFFIXED TO THIS SHEET APPLIES ONLY TO ITEMS ON THIS SHEET. ALL DRAWINGS OR OTHER DOCUMENTS NOT EXHIBITING THIS SEAL SHALL NOT BE CONSIDERED PREPARED BY THIS PROFESSIONAL.

ST. LOUIS AVENUE IMPROVEMENTS PH.3
FEDERAL PROJECT NO. STP-9901 (651)
CITY OF VALLEY PARK, MISSOURI

DATE:	REVISION:
DWN. BY: H.B.C.	APP'D. BY: K.J.W.
DATE: AUGUST 2021	
SCALE: 1"=20'	
PROJ. NO: SC20-1130	DWG. NO: S-7

SITE PLAN



MATCH LINE STA. 28+90 SEE SHEET S-7

MATCH LINE STA. 100+50 SEE SHEET S-9

314-842-4033 (cell)
314-842-5957 (fax)
www.cochrane.com

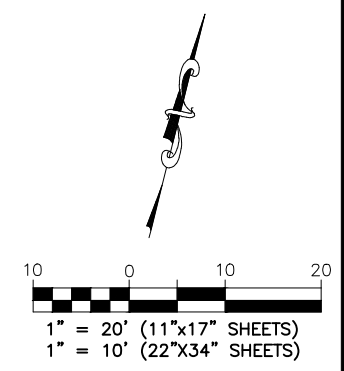
COCHRAN

Civil Engineering
Land Surveying
Architecture
Site Development
Master Planning
General Consulting

ENGINEERING CERTIFICATE OF AUTHORITY NUMBER: 2007000397
LAND SURVEYING CERTIFICATE OF AUTHORITY NUMBER: 2007004529

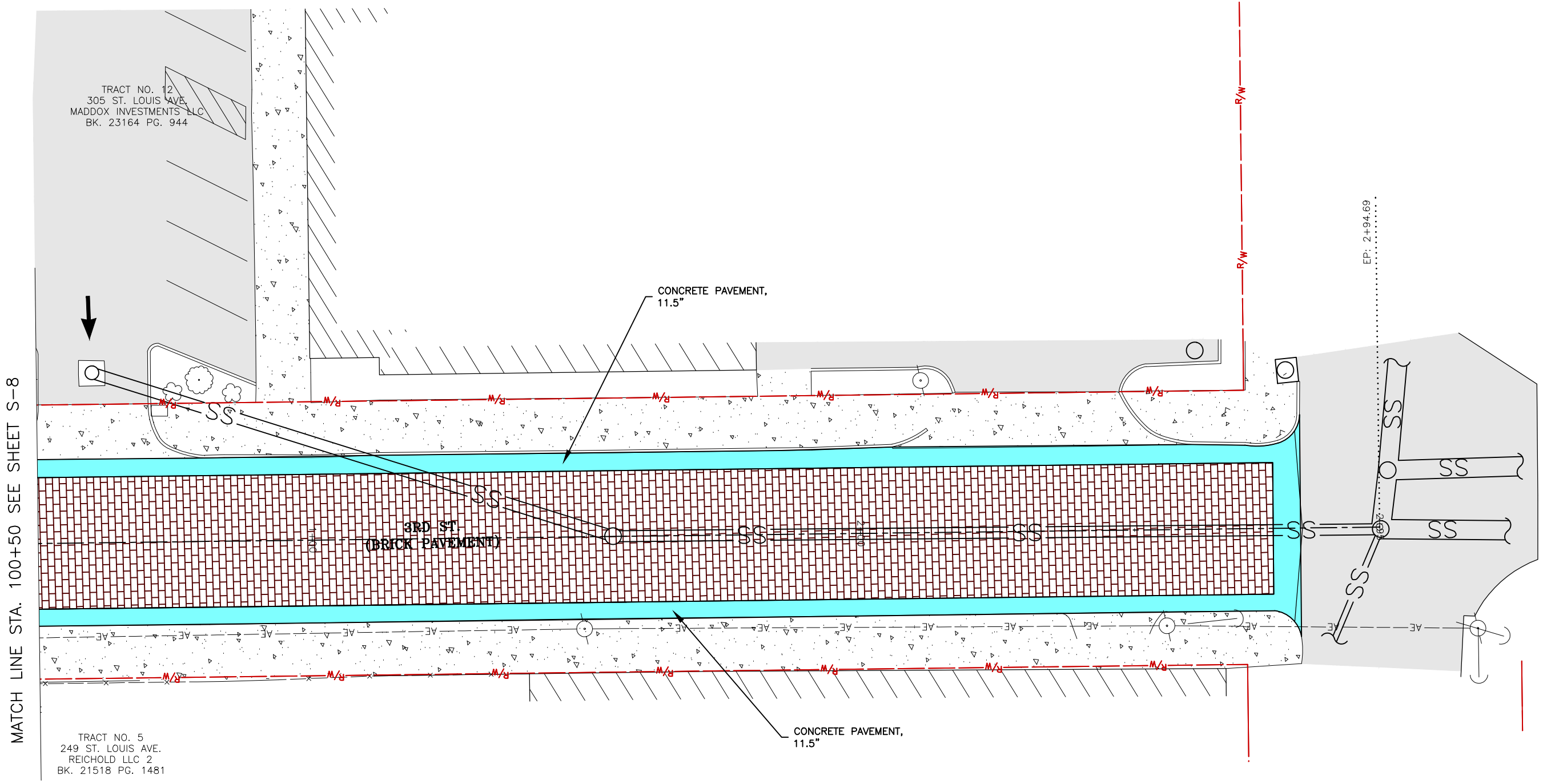
THE PROFESSIONAL'S SEAL AFFIXED TO THIS SHEET APPLIES ONLY TO ITEMS ON THIS SHEET. ALL DRAWINGS OR OTHER DOCUMENTS NOT EXHIBITING THIS SEAL SHALL NOT BE CONSIDERED PREPARED BY THIS PROFESSIONAL.

ST. LOUIS AVENUE IMPROVEMENTS PH.3
FEDERAL PROJECT NO. STP-9901 (651)
CITY OF VALLEY PARK, MISSOURI



DATE:	REVISION:
DWN. BY:	APPD. BY:
H.B.C.	K.J.W.
DATE:	
AUGUST 2021	
SCALE:	
1"=20'	
PROJ. NO.:	
SC20-1130	
DWG. NO.:	
S-8	

SITE PLAN



MATCH LINE STA. 100+50 SEE SHEET S-8

TRACT NO. 12
305 ST. LOUIS AVE.
MADDOX INVESTMENTS LLC
BK. 23164 PG. 944

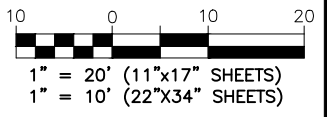
TRACT NO. 5
249 ST. LOUIS AVE.
REICHOLD LLC 2
BK. 21518 PG. 1481

3RD ST
(BRICK PAVEMENT)

CONCRETE PAVEMENT,
11.5"

CONCRETE PAVEMENT,
11.5"

EP: 2+94.69



314-842-4033 (cell)
314-842-5957 (fax)
www.cochrane.com

COCHRAN

737 RUDDER ROAD
FENTON, MISSOURI 63026

- Civil Engineering
- Land Surveying
- Architecture
- Site Development
- Master Planning
- General Consulting

ENGINEERING CERTIFICATE OF AUTHORITY NUMBER: 2007000937
LAND SURVEYING CERTIFICATE OF AUTHORITY NUMBER: 2007004529

THE PROFESSIONAL'S SEAL AFFIXED TO THIS SHEET APPLIES ONLY TO ITEMS ON THIS SHEET. ALL DRAWINGS OR OTHER DOCUMENTS NOT SHIBTING THIS SEAL SHALL NOT BE CONSIDERED PREPARED BY THIS PROFESSIONAL.

ST. LOUIS AVENUE IMPROVEMENTS PH.3
FEDERAL PROJECT NO. STP-9901 (651)
CITY OF VALLEY PARK, MISSOURI

DATE:	REVISION:
DWN. BY: H.B.C.	APPD. BY: K.J.W.
DATE: AUGUST 2021	
SCALE: 1"=20'	
PROJ. NO.: SC20-1130	DWG. NO.: S-9

XXMSD-XXXX